

# North Yorkshire CCG

## CICC for Richmondshire Area Committee

23 March 2022



# CICC: looking back

**Initial vision:** *"A brand-new joint Ministry of Defence and NHS hub delivering a range of health and social care services to improve the health and wellbeing of the people of Catterick Garrison, Richmondshire and beyond."*



Strategic Command  
Headquarters Defence Medical Services

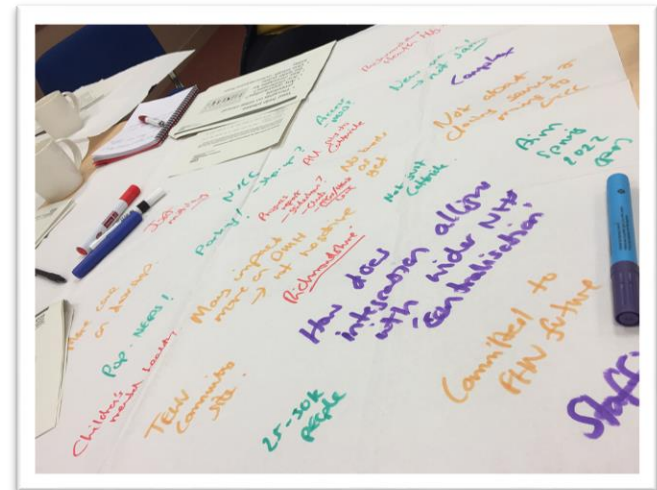


North Yorkshire  
Clinical Commissioning Group

## CLCC: looking back

# Early engagement

- Concern over capacity to support growing numbers of military personnel, dependents and families, as well as the residential population
- Concern over mental health and children's service provision
- Lack of integration
- Lack of parity in terms of service (military vs NHS)
- Dignity issues and privacy issues in terms of access
- Quality of estates
- Rurality and travel
- Inequity of access to reflect the needs of the population



# CICC: looking back

## Developing the initial vision

- First in the world between MOD and NHS
- Rebasing personnel, their dependents, existing and growing/ ageing Richmondshire population
- Move to person and family-centred holistic and preventative care
- Current facilities and locations restrictive to vision
- Disparity of care compared to other areas with some cohorts particularly disadvantaged and vulnerable
- Armed forces families can have specific health needs, service access issues and additional concerns
- Vision developed with partners and community representatives including Parents 4 Parents



**Parents4Parents-NorthYorks**  
Peer support for the wellbeing  
of parents



Strategic Command  
Headquarters Defence Medical Services



North Yorkshire  
Clinical Commissioning Group

# Key partners

**NHS North Yorkshire Clinical  
Commissioning Group (CCG)**

**&**

**Ministry of Defence (MOD)**

**Programme Leads**

**NHS England/Improvement**

NHS regulators and central funding

**NYCC Scrutiny of Health Committee**

Reviews the planning, provision and  
operation of health services

Local voluntary community and social enterprise sector and patients/public

**NHS Property Services**

Supporting the project partners to make estate decisions  
that enable excellent patient care both now and in the future

**North Yorkshire County Council**

Provides a range of public services and work with  
us to ensure the needs of the population are met

**Richmondshire GP practices**

Ensuring primary care services meet the needs of  
our local population

**Richmondshire District Council**

Leading the planning process and ensuring our  
population has access to local amenities

**NHS service providers**

Providing services from the new hub alongside  
existing facilities and working within the community

**Tilbury Douglas**

Appointed to deliver the design and build

# CICC: what we've achieved so far

	Programme milestones
Early 2016	Project Initiation Document developed
April 2020	NHS North Yorkshire CCG (NY CCG) formed
June 2020	NY CCG Governing Body approve Outline Business Case
February 2021	Tilbury Douglas appointed to deliver design and build phase
Summer 2021	Initial concept designs developed
August 2021	Pause in engagement due to review of design phase
September 2021	New programme of engagement commences for CICC
October 2021	Confirmation to 'Develop the Preferred Option'
2 December 2021	First Stakeholder Engagement Forum (SEF) meeting
22 March 2022	VCSE drop-in event to view design concepts (pre-election period)



Strategic Command  
Headquarters Defence Medical Services



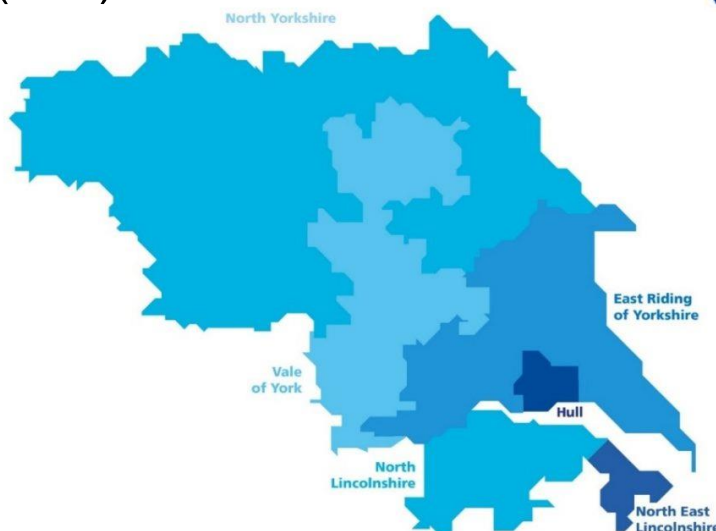
North Yorkshire  
Clinical Commissioning Group



# CICC: where we are now

## Updating the vision

- Rebasing army personnel
- Growth in non-military families
- Primary care estates
- Introduction of Primary Care Networks
- CCG moving to Integrated Care System (ICS)



#GPforwardview



Strategic Command  
Headquarters Defence Medical Services



North Yorkshire  
Clinical Commissioning Group

# CICC: where we are now

## Updating the vision

- Current aim is for the project to complete in 2024 due to a more detailed analysis of the service and building requirements.
- Subject to formal business case approvals for partner organisations.
- Partners have confirmed support to progress to the 'Develop the Preferred Option' (DPO) stage of the Catterick Integrated Care Campus scheme.



## Initial design concepts



Strategic Command  
Headquarters Defence Medical Services



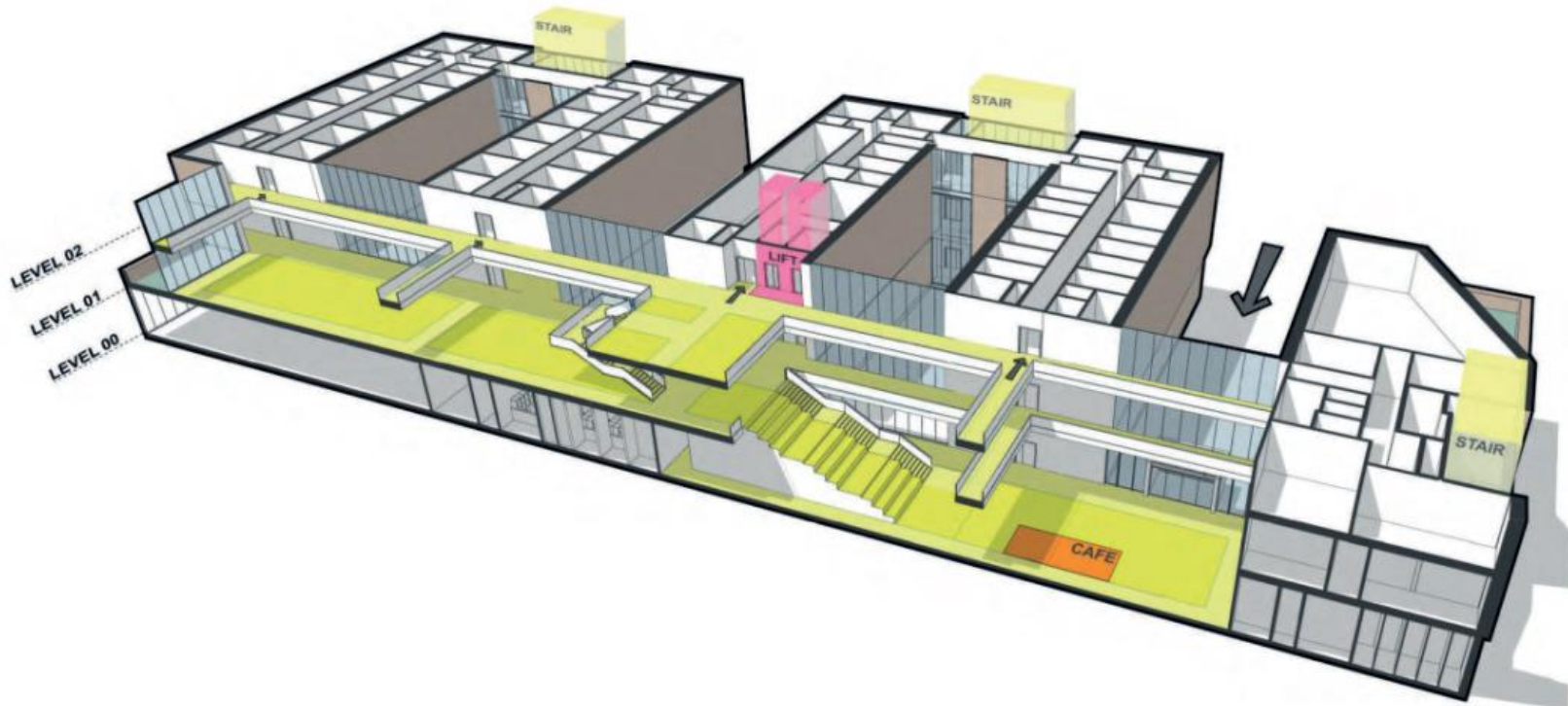
North Yorkshire  
Clinical Commissioning Group





## Proposed design

Atrium section









## Our commitments to you

NHS and MOD's first **net zero**  
facility DREAM Excellent

### Integrated care campus

A beacon for health,  
wellbeing and rehabilitation

### Collaborative

multi-stakeholder and  
multi-user group  
engagement

### Innovation in delivery

BIM Level 2/MMC

Civilian and military  
community **social value**  
benefits

Lifetime **best value** and  
**whole-life cycle** costing

| **Clinically led** design solution

| GMP **September 2022**  
Completion **Summer 2024**





# CICC: what's next?

## Next steps



- Site demolition due Spring 2022
- Clinical modelling nearing completion
- Developing the Full Business Case
- Formal design and planning application process
- NHS England/Improvement assurance stages
- More stakeholder and public events
- Addressing primary care facilities
- Navigating the 'new world' of the NHS (ICS)







Strategic Command  
Headquarters Defence Medical Services



**North Yorkshire**  
Clinical Commissioning Group



# Questions

**Thank you**

[www.northyorkshireccg.nhs.uk](http://www.northyorkshireccg.nhs.uk)

